



Lilitab Swipe

Accessory Testing Guide

v1.1, 02Feb15

Lilitab, LLC
39 Larkspur Street, Suite B
San Rafael, CA 94901

Phone: (888) 705-0190
Email: support@lilitab.com

lilitab

Introduction

This document describes the process for testing the Lilitab Swipe Magnetic Stripe Reader (MSR) Accessory using the Lilitab Swipe demonstration app.

Downloading the App

The Lilitab Swipe app is available in the Apple App Store. To download the app, search for “Lilitab Swipe” in the App Store using the iPad on which it is to be installed. The App Store page will look similar to:

Lilitab Swipe [View More by This Developer](#)

By Lilitab

Open iTunes to buy and download apps.

Description

The Lilitab Swipe app works with the Lilitab Swipe Magnetic Stripe Reader accessory. The app demonstrates card reading and provides for testing of indicator LEDs, display of accessory status, and updating of accessory firmware.

[Lilitab Swipe Support](#) [...More](#)

iPad Screenshot

```

lilitab swipe
***** status Nov 10 @ 14:44:18 *****
Comm Protocol: IAP2
Comm Status: ok
Reader Head Date/Time: <<NULL>>
Reader Head ID: 000-000-000
Reader Head Info: SEES: 00 00 00 00 00 00 00 0000-0000-0000 4319587230344630M035 00
NoMIDLLabel NoMDKDCV NoMID
Reader Head Status: Off
Reader Head Type: Vantone
Reader Head Version: SSEMTEK CIPHER 2 rev 4.10.0000 BUILD DATE Apr 3 2014 BUILD
TIME: 16:21:08 1 1 1
status: ok
Swipe RL Version: 003.000 Date Apr 9 2013 Time 14:20:28
Swipe FW BuildDate: Nov 8 2014 Time 17:00:38
Swipe FW Version: 03.02.00 Size 0x000DAF6C CRC32 28FFA232
Swipe HW Version: Gen 1, Rev 2
Swipe LED Mode: Off
Swipe Timeout: 40
***** status complete *****

```

Clear Window Copy Window

Enable Swipe

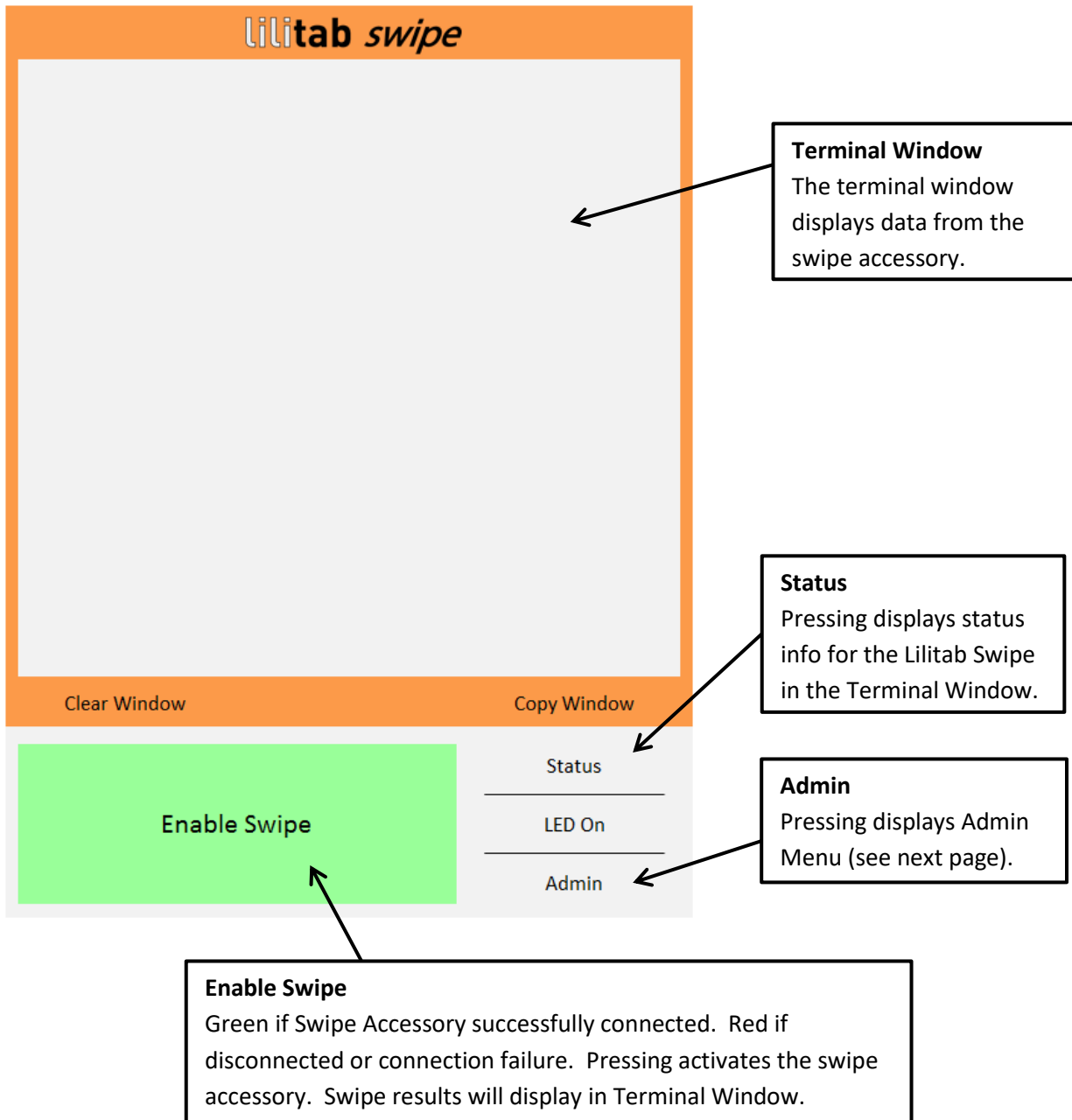
Status

LED On

Admin

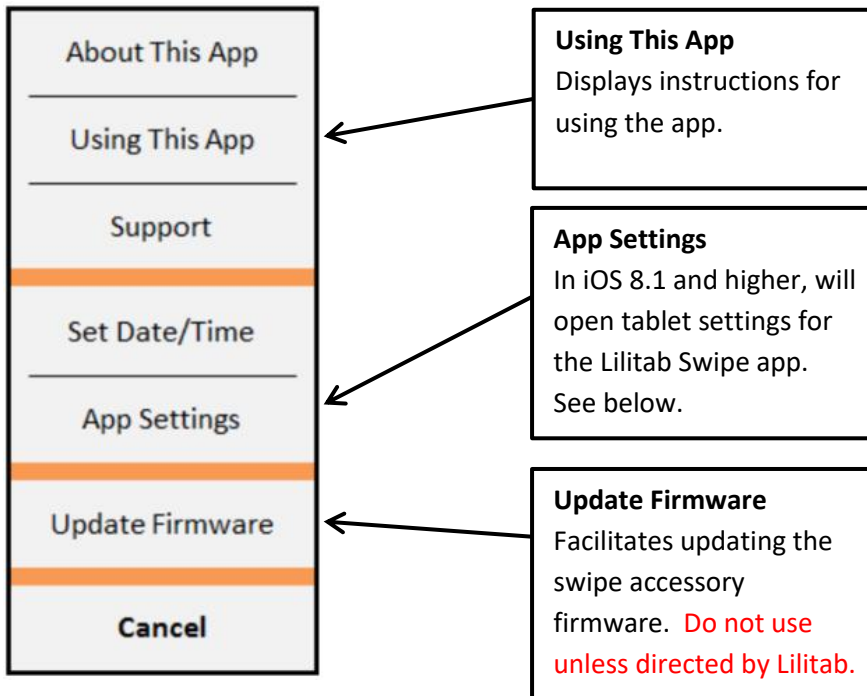
You will need an active iTunes account. The app is free, so no credit card information is required. After downloading and installing the app, click “Open”.

App Interface



Admin Menu

The Admin Menu provides information, settings access, and firmware updating.



App Settings

- **Allow Device To Sleep** (Yes/No): If “No” (gray), tablet will not enter sleep mode when Lilitab Swipe app is active. If “Yes” (green), or if Lilitab Swipe app is not in focus, tablet will sleep according to default sleep setting (under “General > Auto-Lock”). Useful to prevent tablet from going to sleep in kiosk mode or while testing units.
- **Allow Multiple Swipes** (Yes/No): If “No” (gray), accessory will exit swipe mode after one swipe. If “Yes” (green), accessory will take multiple swipes until either explicitly canceled or timeout.
- **Swipe Timeout** (Seconds, 0 = No Timeout): Time, in seconds, that the accessory will stay in swipe mode. If set to “0”, it will not exit swipe mode until explicitly cancelled. Timeout clock starts when swipe mode is entered, and is *not* reset by swiping.
- **No Power Blink Rate** (Seconds, 0 = Off): This is the frequency that the LEDs will blink if the tablet is not charging. Useful for detecting if a power cable is unplugged (and therefore the tablet battery is draining).

Example Accessory Status

Once the accessory is connected to the tablet (green “Enable Swipe” button showing) the accessory status/configuration information can be shown by pressing the “Status” button. Below is a typical status report and interpretation for a correctly-functioning encrypted Magtek card reader (Lightning version).

```
=====  
===== status Jun 4 @ 11:05:15 =====  
Accessory Type: Swipe  
Comm Protocol: iAP2 com.verifone.lilitab  
Comm Status: ok  
Reader Head Date/Time: <<NULL>>  
Reader Head ID: (MagTek)  
Reader Head Info:  
Reader Head Status: Off  
Reader Head Type: MagTek:dav  
Reader Head Version:  
Swipe BL Version: 003.000 Date Apr 9 2013 Time 14:20:28  
Swipe FW BuildDate: Aug 18 2017 Time 11:30:12  
Swipe FW Version: 03.24 Size 0x0000B250 CRC32 0908DD51  
Swipe HW Version: Gen 1, Rev 2  
Swipe LED Mode: Off  
Swipe Timeout: 30  
UUID: 35FFDA053257323830680557  
===== status complete =====
```

iAP2: Lightning Connector

com.verifone.lilitab protocol (normal)

Reader Head ID should be "(MagTek)"

MagTek:dav = MagTek Card Reader

03.24 = normal firmware version (MagTek Lightning)

Example Swipe Results

To perform a test read of a magnetic stripe, press the large green “Enable Swipe” button and swipe the card through the card reader. Below is an example results of a successful credit card swipe through an encrypted Liliswipe MagTek reader. Actual readings may vary, but should follow similar format.

Typical Credit Card, encrypted:

```

===== swipe data Jun 4 @ 11:06:08 =====
status:ok
Track2: 4242000080004242=2205000000000000
Track1: B4242000080004242^LAST/FIRST          ^2205000000000000000000000000000000000000
rawData:
%B4242000080004242^LAST/FIRST          ^22050000000000000000000000000000?;
4242000080004242=2205000000000000?|0600|665A97F76FD484C5DCC3E87104B2495770D37A85A72
2667CBD42017107E4DD07683EC00D070FDFDBC0E190C62277848E64FD5C7AF537B541A6B7193B3D9E62
F09D9189B7F49C0F0A7CCF28265D30D92C|22480853EA567607AB0E5040EFA4421B1A9C9835B16E1171
6C4674CCD8E293E78C9133324B95E3A5||61402200|D170F65F1AC30DF39FD3F22E37DC68CD846CAE5D
EB007C34DD13F5C06E06B6C961E6748C00C81E5163EBB65605DA4507A118D6527E1891AB|B42DCEF061
118AA|37D716D1EE4A26A9|9011880B42DCEF000001|32BE||0000
===== end swipe data =====
  
```

The rawData contains the encrypted track data and the MagnePrint data needed for decryption, delimited with vertical bars (“|”), per the SPI MagneSafe V5 Communication Reference Manual (available at <https://www.magtek.com/content/documentationfiles/d99875475.pdf>):

```

[P30]
[P32] [Tk1 SS] [Tk1 Masked Data] [ES] [P33]
[P32] [Tk2 SS] [Tk2 Masked Data] [ES] [P33]
[P32] [Tk3 SS] [Tk3 Masked Data] [ES] [P33]
[P31]
[P35] [Reader Encryption Status]
[P35] [Tk1 Encrypted Data (including TK1 SS and ES)]
[P35] [Tk2 Encrypted Data (including TK1 SS and ES)]
[P35] [Tk3 Encrypted Data (including TK1 SS and ES)]
[P35] [MagnePrint Status]
[P35] [Encrypted MagnePrint data]
[P35] [Device serial number]
[P35] [Encrypted Session ID]
[P35] [DUKPT serial number/counter]
[P35] [Clear Text CRC]
[P35] [Encrypted CRC]
[P35] [Format Code]
[P34]
  
```

Sample Accessory Test Procedure

Accessory Connect

1. Plug iPad onto connector on Lilitab Swipe MSR Accessory
2. Turn green keepers opposite connector to setting "2"
3. Power on iPad and start Lilitab Swipe test app
4. Verify that "Enable Swipe" button turns green and interface looks as shown on Page 2
5. If "Enable Swipe" not green, verify that there is no app conflict:
 - a. Double-click Home button to enter App Tray.
 - b. Remove all apps (including Lilitab Swipe test app) from tray.
 - c. Re-launch Lilitab Swipe test app from finder
 - d. If "Enable Swipe" does not turn green, report to Lilitab for RMA

Test Charging

1. Attach Head to MagDOCK (mount arm) and lock with key
2. Head should start charging
3. If not charging verify:
 - a. MagDOCK USB connector (cable from mount arm) is plugged into 12W Apple power supply and power supply is plugged into live mains power
 - b. Lilitab Swipe app is active on tablet
 - c. MagDOCK is working (mount head on known-good MagDOCK and verify still not charging)
 - d. If 3a/3b/3c all true, but still not charging, report to Lilitab for RMA

Test Swipe

1. Press "Enable Swipe". Swipe sample Credit Card. Verify that result looks like sample on Page 5.
2. If swipe does not match sample:
 - a. Try a second or third swipe to verify that card was smoothly swiped through reader.
 - b. Swipe card through known-good reader. If error, card may be worn/demagnetized. Try known-good backup card in known-good reader. If successful, try known-good card in unit being tested.
 - c. If 4a/4b both fail, report to Lilitab for RMA

Verify Reader Info

1. Press "Status"
2. Verify that result looks like sample on Page 5.
3. If any differences between key areas highlighted on Page 5 and status shown, report to Lilitab for RMA